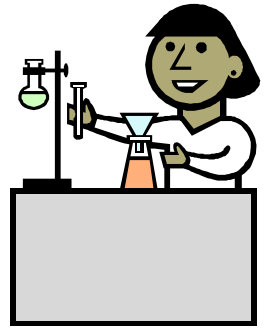


Grove Science Tea Challenge



Name:

Primary School:



Introduction

We are all scientists!

As a baby you investigated the world about you. You dropped things from your high chair and you needed mum or dad to bring them back. You were learning about gravity you just did not call it that.

In science, we try learn from the things that we see but it can be very complicated so we carry out experiments to make it clearer.

The task

Your Grove School Science Teacher would like you to investigate how to make the perfect cup of tea.

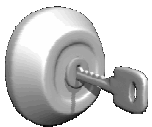
Use this booklet to record everything you do, show it to your tutor and hand it to your science teacher on your first science lesson.

There are prizes for the most interesting ones.



Safety

- Remember - Be careful.
- Boiling water is dangerous.
- Always ask an adult before you carry out your investigation.



Key Words

(Try to use these words in your writing)

Infusion: When something such as tealeaves are soaked with a liquid to dissolve the soluble part of the plant. e.g. colour and flavour of tea.

Solution: This is made when a solid dissolves in a liquid.

Suspension: This is made when the particles of a solid do not dissolve and float around in the liquid.

Personal, Learning and Thinking Skills (PLTS)

These are the skills and qualities that you need to succeed in school and the world outside school. Developing these skills will help you to become a successful student and learner, a confident individual and responsible citizens.

There are six PLTS:

- Independent enquirers
- Creative thinkers
- Team workers
- Self-managers
- Effective participators
- Reflective learners.

Whilst you are carrying out your tea investigation think about which of these skills you might be using.

What do you already know?

Write down here what you already know about Tea bags and tea? (Background).

Here are some things that you need to think about in your investigation. You may be able to think of others.

- Will the amount of water you use affect the tea?
- How long does it take for the water to turn brown?
- Does the time you leave the tea bag to infuse make a difference to the taste?
- Are all tea bags the same?

Equipment you might need

Always ask an adult before you start using this equipment.

- Containers to make tea in.
- Watch or clock
- Measuring jug
- Kitchen roll or tissue
- Hot water
- Milk
- Sugar
- Adult who likes tea to be your guinea pig taster!



Remember boiling water is dangerous. Take great care not to burn yourself or anyone else.

Before the Investigation

Write down here what you are going to investigate.

Write down here what you are going to measure.

Write down here the things you will do to make a fair test.

Write down here what you think you will find out (Prediction).

After the Investigation

Write down here how you did the investigation—use a diagrams if it helps.

Write down here what you found out. Try to explain your findings. Do they agree with your prediction?

Remember to print out this booklet and bring it in for your teacher in September.

This document was created with Win2PDF available at <http://www.win2pdf.com>.
The unregistered version of Win2PDF is for evaluation or non-commercial use only.
This page will not be added after purchasing Win2PDF.